



Overview of the Project

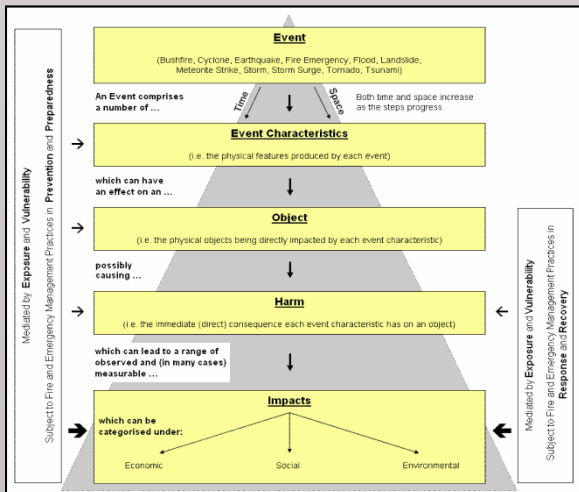
The Pilot Impacts Portal is a component of the Australian Natural Disasters Impacts Framework Project [1] which is a national initiative to better understand the economic, social and environmental impacts on communities due to fire emergencies and natural disasters. For more information please visit: <http://www.fire.nsw.gov.au/page.php?id=914>

About the Impacts Portal

The Pilot Impacts Portal is a web accessible user interface to the Impacts Framework [2] and supporting data items. The aim is to have a single point of reference to a collection of national data items describing historical fire emergency and natural disaster (FEND) events and their associated impacts.

The portal will be available from the **15th June 2012** and will undergo a 12 month trial finishing at the end of June 2013. An evaluation report will be produced at the end of the trial period focusing on the use of the portal by the Australian emergency services community. This report will form part of the post implementation review of the trial.

The Impacts Framework



The Impacts Framework, developed by RMIT and the Bushfire CRC, defines the process used to determine the economic, social, and environmental impacts, losses and benefits resulting from a fire emergency or natural disaster. The framework is used as a guide to determine and measure the impacts resulting from an event.

Expected users are described as:

- A policy maker involved in the emergency risk management sector, health sector, or climate change
- Program and policy evaluators
- Crisis management teams and operational front-line staff and discovery teams
- Researchers, standards and product developers and building science professionals
- Governments and regulators
- Insurance companies and loss adjusters

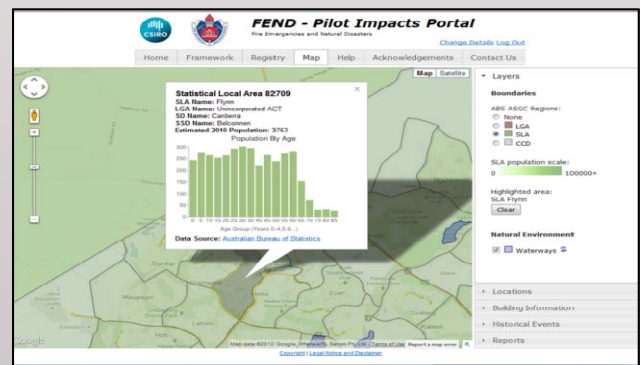


Figure 1: Portal example showing ABS demographics

Acknowledgements

The Impacts of Natural Disasters and Fire Emergencies is a national project managed by Fire & Rescue NSW (FRNSW). This project is part of the Natural Disaster Mitigation Program (NDMP) and is jointly funded by the Commonwealth and NSW Governments with 50% contribution from the Commonwealth of Australia and 50% from the NSW Government.

Features

➤ Impacts Framework Explorer

- Allows the contents of the Impacts Framework to be easily examined
- Access does not require registration

➤ Data Items Registry

- Contains metadata for each data item
- Access does not require registration

➤ Self Registration

Anyone with an email address can register to access the portal at:

www.fend.org.au/pipadmin/admin_create_user.jsp

➤ Recognised Emergency Service Agencies

Users who register with an email address from a recognised emergency services agency have access to extra features:

- Report generation
- Data download

➤ Map View

- Google Map based user interface
- Only available to registered users

➤ Data Items

A collection of various datasets referencing the Impacts Framework is available on the Map View

➤ Data Linkages

All data is linked to the Impacts Framework

➤ Reports and Data Extracts

PDF reports and data extracts can be produced by users from recognised emergency services agencies

➤ User Feedback

Registered users are encouraged to provide feedback to the portal administrators. An online feedback form is available via the portal, or send an email to: ICTC-fend@csiro.au

User Guide

New users are encouraged to download and read the user's guide:

www.fend.org.au/portal/PIPUsersGuide.pdf

Frequently Asked Questions

A Frequently Asked Questions (FAQ's) is available via the portal.



Figure 2: Impacts Framework Explorer

Further Information

Pilot Impacts Portal	www.fend.org.au
Portal Administrators	ICTC-fend@csiro.au
FRNSW (Project Information)	Nick Nicolopoulos 02 9265 2962 nick.nicolopoulos@fire.nsw.gov.au
CSIRO (Portal Assistance)	Robert Power 02 6216 7039 robert.power@csiro.au

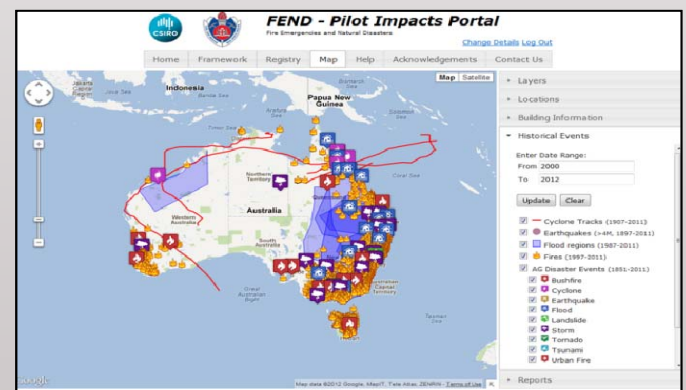


Figure 3: Portal Map View

References

[1] FRNSW Australian Natural Disasters Impacts Framework Project

www.fire.nsw.gov.au/page.php?id=914

[2] Catherine Stephenson. Impacts Framework for Natural Disasters and Fire Emergencies. May 2010. RMIT University and Bushfire CRC