

ELECTRIC BIKE AND SCOOTER CHARGING SAFETY



Lithium-ion batteries are the fastest growing fire risk in New South Wales. Charge E-bikes and E-scooters safely to reduce your risk.



Don't charge when you're asleep.



Once the battery is full, disconnect it from the charger.



Don't charge in or near living-spaces like bedrooms or living rooms. Charge in an open area like a garage or shed, away from exits. Make sure you always have a working smoke alarm.



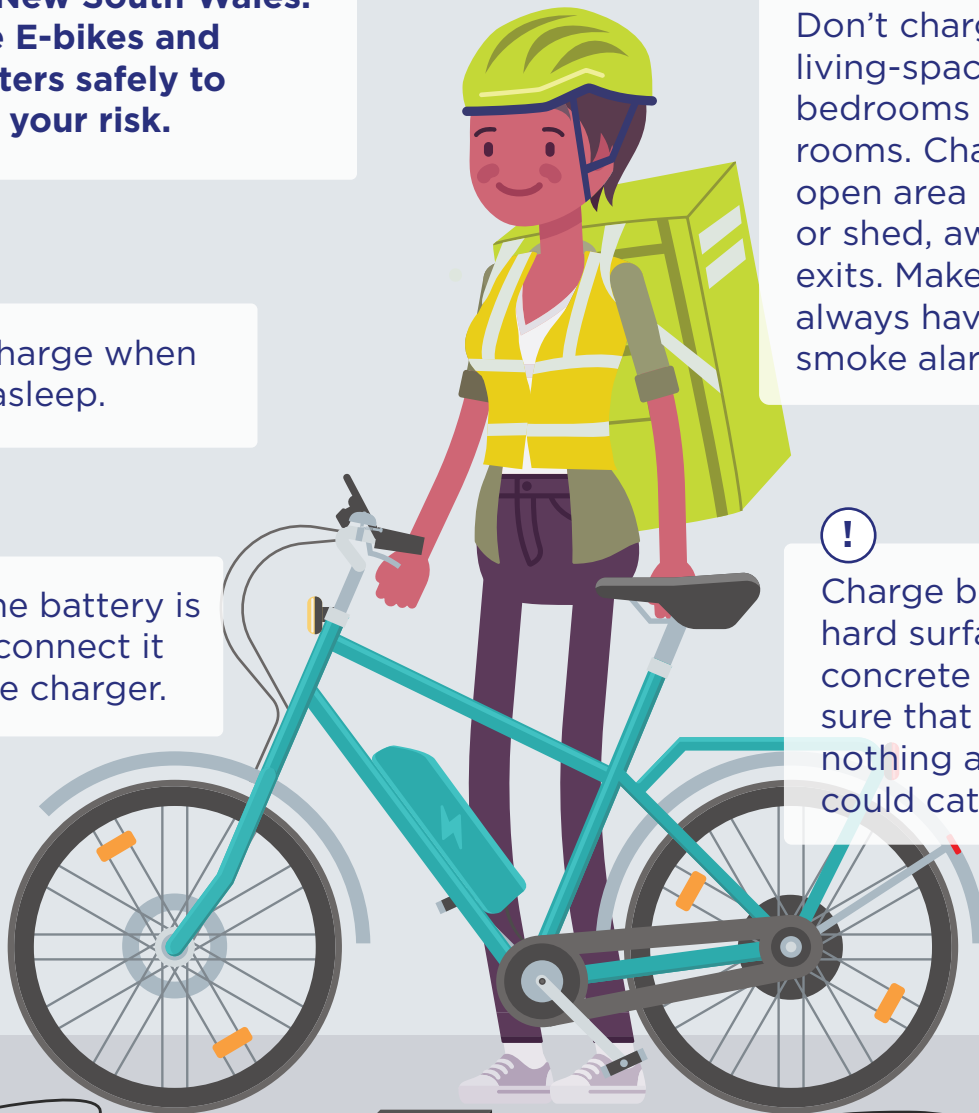
Charge batteries on hard surfaces like concrete or tiles. Make sure that there's nothing around it that could catch on fire.



Always use the charger that came with your device. Just because the plug fits, it doesn't mean it's compatible.



Buy known brands with the Australian Regulatory Compliance Mark tick.



SHOP, CHARGE, AND RECYCLE SAFELY.

