

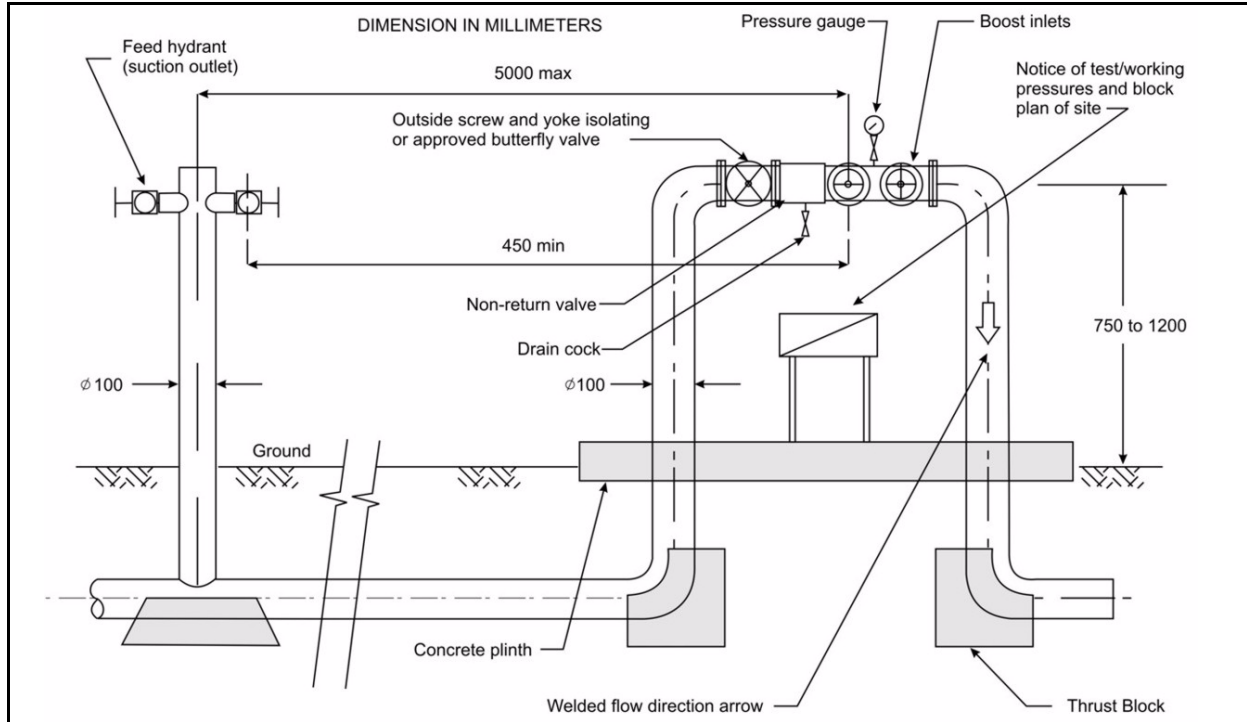
Guide Sheet No. 1

Features of AS2419.1 Booster Assembly

Version 01.02 Released: 16 April 2012

© Copyright State Government of NSW (FRNSW) 2012

This guide sheet outlines the features of an AS2419.1 booster assembly.



When inspecting an AS2419.1 booster system ensure the following:

- 1 Equal number/s of valve controlled outlets to boost inlets are provided (e.g. 4 in and 4 out).
- 2 No more than eight booster inlets are installed in the booster assembly.
- 3 Sufficient room is provided for pumping appliances (1 pumper for four booster inlets).
- 4 Feed outlets are located no more than 5 metres from the boost inlets.
- 5 Feed outlets are located no closer than 450 mm from the boost inlets.
- 6 Feed outlets are located upstream (water supply side) of the main isolating valve.
- 7 A directional arrow indicating water flow is visible on the body of the booster.
- 8 A non-return valve is positioned downstream (property side) of the main isolating valve.
- 9 Boost inlets are located downstream (property side) of the non-return valve.
- 10 A pressure gauge is located downstream (property side) of the non-return valve.
- 11 A site block plan is provided.
- 12 The height of feed outlets and boost inlets is between 750mm and 1200mm.
- 13 When all feed outlets and booster inlets have firefighting hoses connected, one hose will not cause interference with other hoses, fixtures or construction.
- 14 A mark of compliance as per AS 2419.3 should be located on the